

F.A.Q for TE100-PS3plus

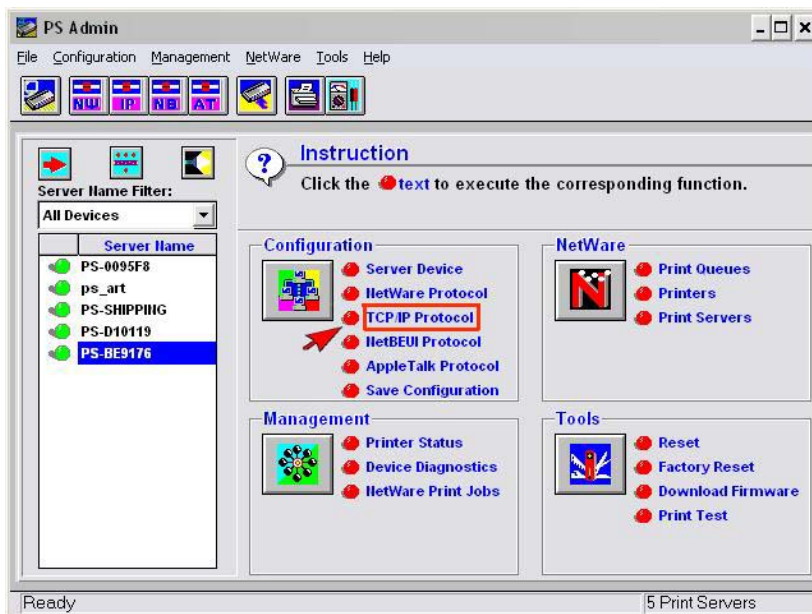
Q: Why doesn't PS-Admin utility detect my print server?

If you are using Windows XP you will have to disable the built in firewall. But for all operating systems you have to disable any other form of firewall software such as Norton Internet Security, Black Ice, and ZoneAlarm.

Make sure that you have "Client Services for Netware" installed, it should automatically install IPX/SPX. IF not please do so. **Note: Windows XP Home edition does not have the capability to install Client Services for Netware.**

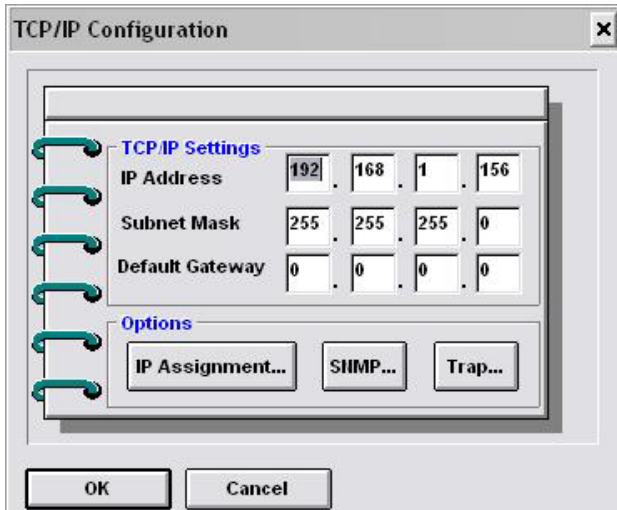
Q: How do I change the IP address of my print server?

Step 1 Open up the PS-Admin Utility and click on TCP IP Protocol.



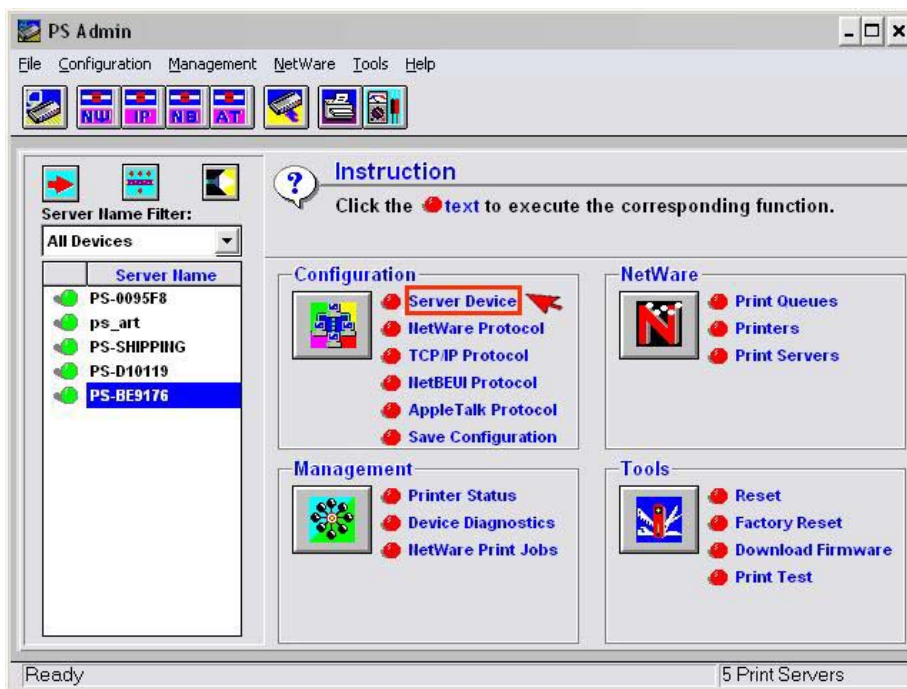
Step 2 Change IP Address:

In this dialog box, you can *Manually Assign*. When completed, click *OK*.

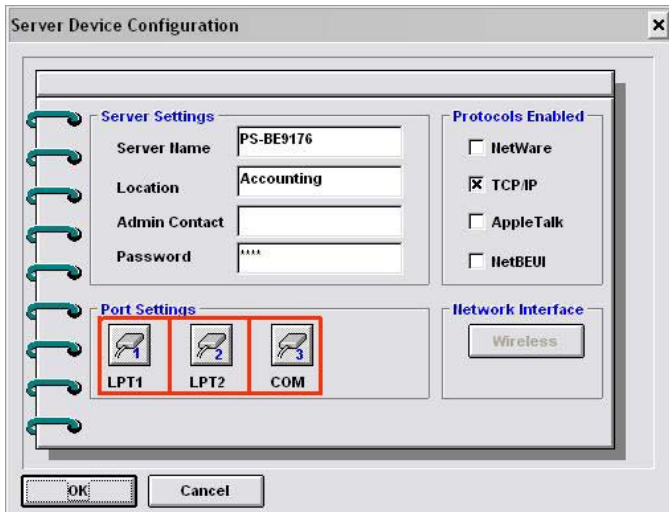


Q: How do I find the Port Name of the Print Server?

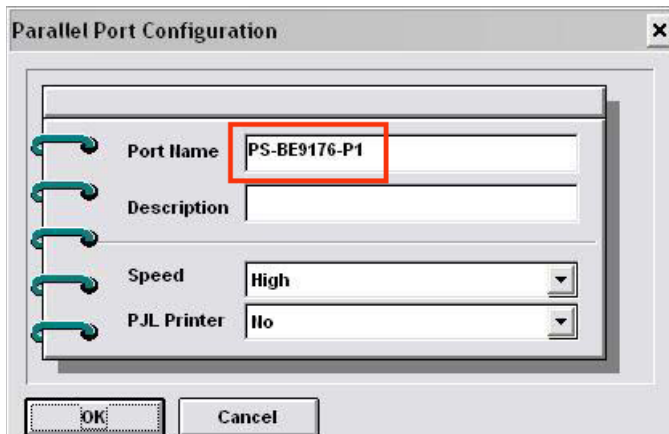
Step 1 Click on Server Device.



Step 2 Click on the port that you have your printer plugged into.



Step 3 Write down the Port Names for future reference.



Q: How do I install my printer on Windows 95/98/ME?

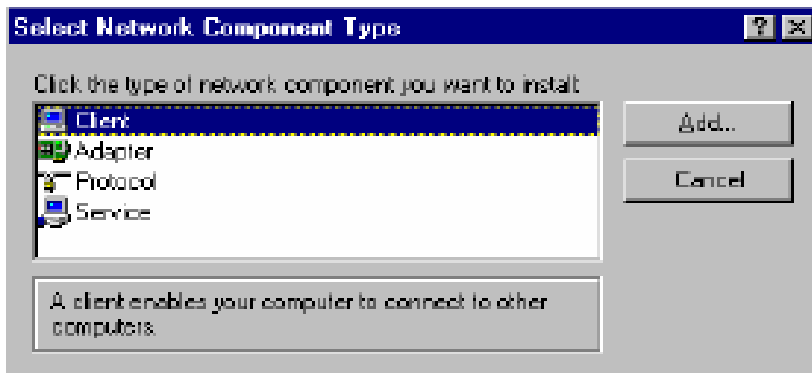
In Windows 98/Me you will need to install the **LPR** client.

For Windows 98/ME you will also need to know the port name that you are printing to (The Port Name is the PS-xxxxxx-P1, x being the actual number listed in the Port Name box).

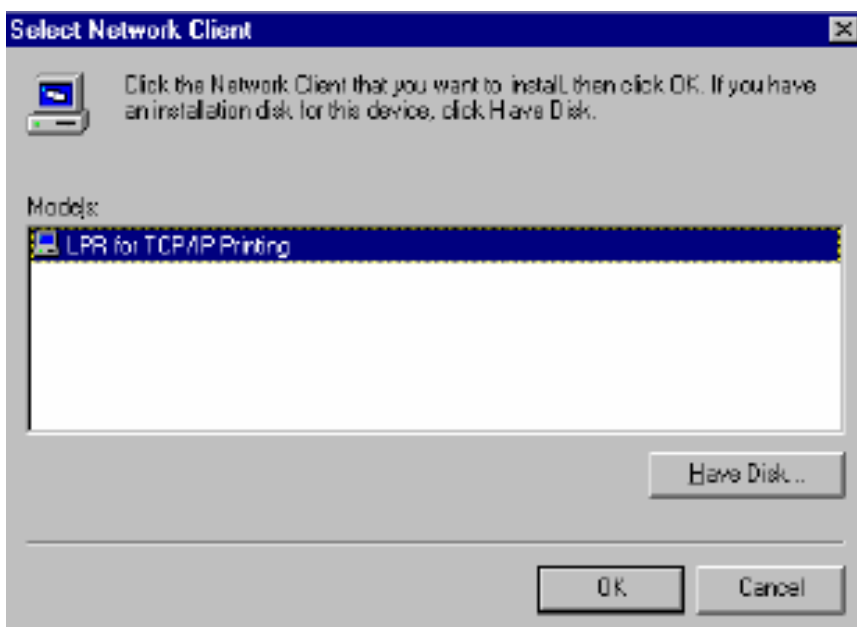
Installing LPR:

Step 1 Once the file is downloaded and extracted, Go to **Start > Settings > Control Panel >** double-click on **Networks**. Click on **Add**

Step 2 Highlight **Client** and click on **Add**.

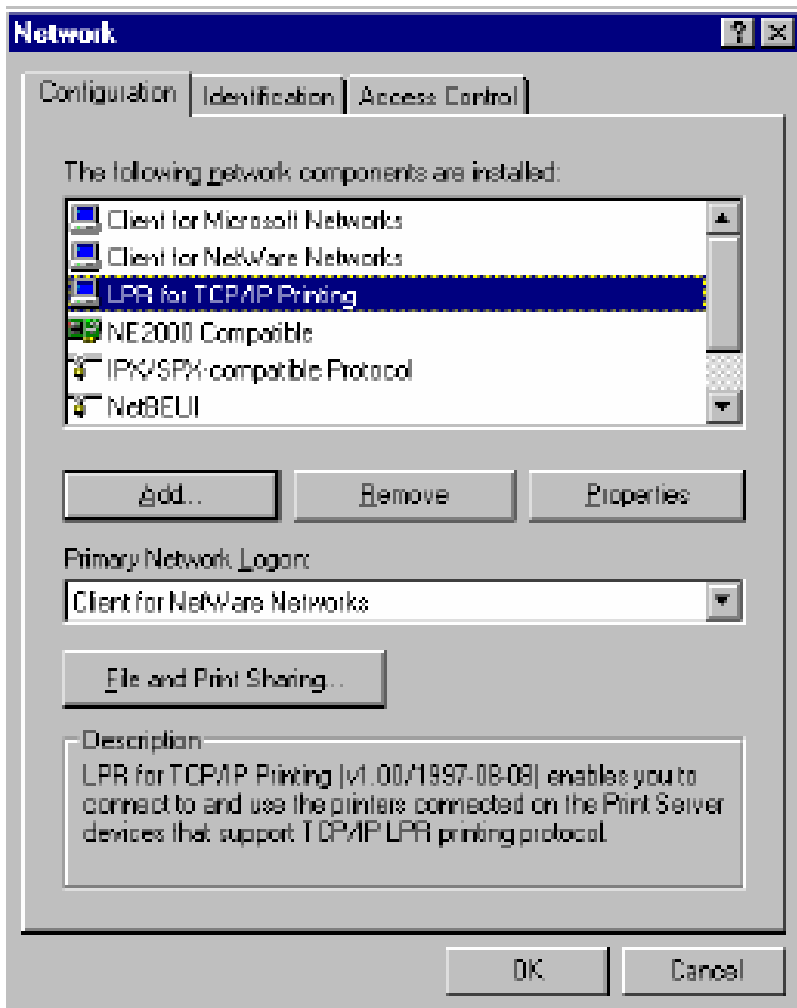


Step 3 Click on **Have Disk > Browse**. Browse to the location of the extracted LPR Client.

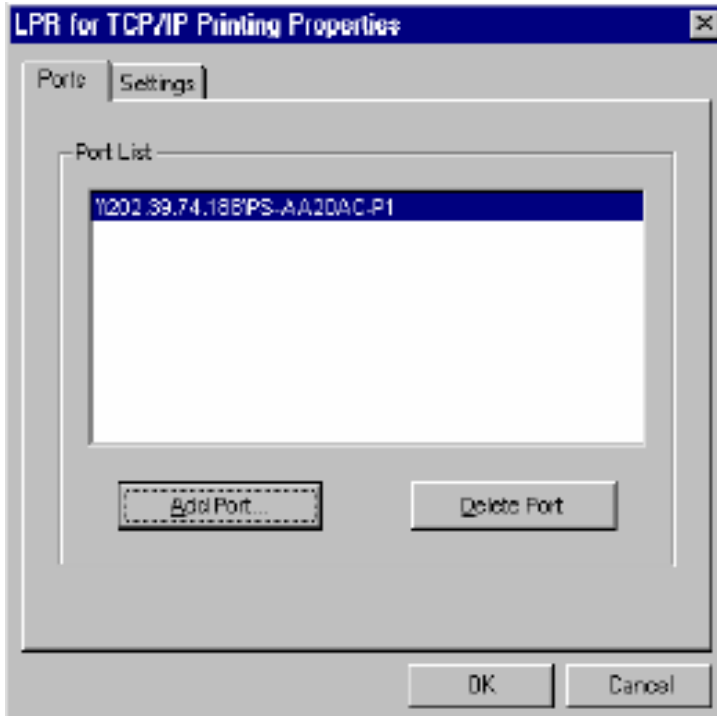


Step 4 Click **OK** 3 times.

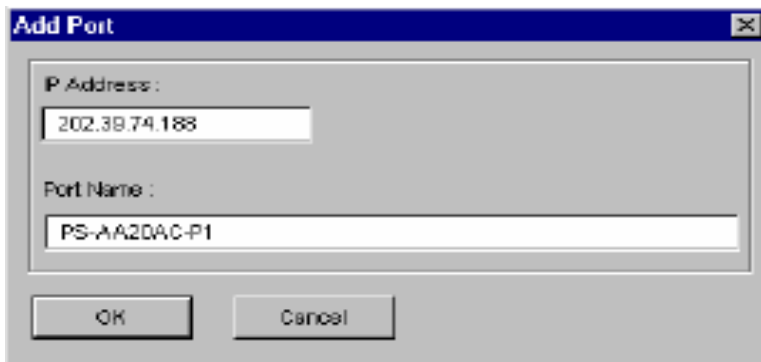
Step 5 From the list highlight **LPR for TCP/IP** and click on **Properties**.



Step 6 Click on Add Port



In the top field type in the IP address of your print server. In the bottom field type in the port name of your print server, the Port Name is the PS-xxxxxx-P1, x being the actual number listed in the Port Name box. Click on **OK**



Step 7 Click on **OK**. Windows will ask you to restart. Click **Yes**.

LPR is now properly installed on your computer.

Printer Installation

Step 1 Open your printers folder. Go to Start > Settings > Printers.

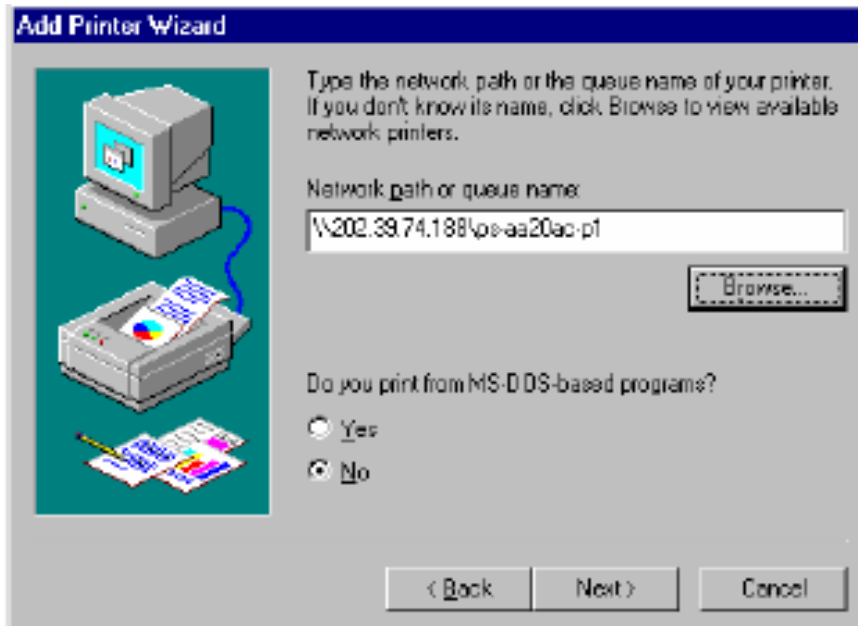
Step 2 Double-click on the Add Printer icon, which will launch the Add Printer Wizard.



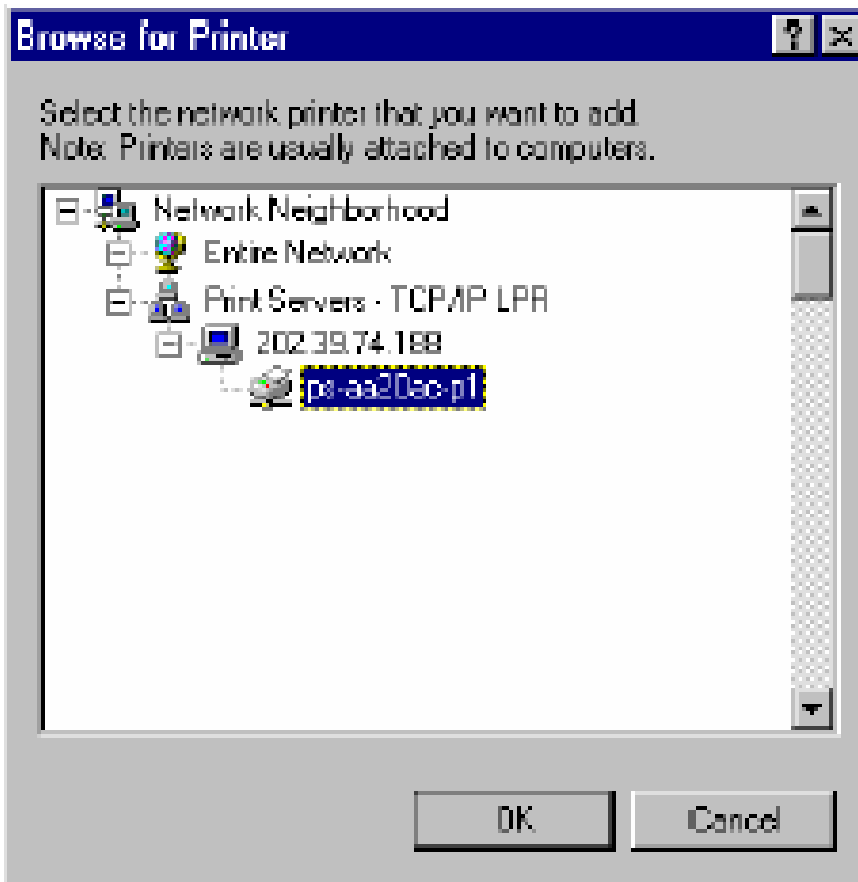
Select **Network Printer** and click on **Next**.



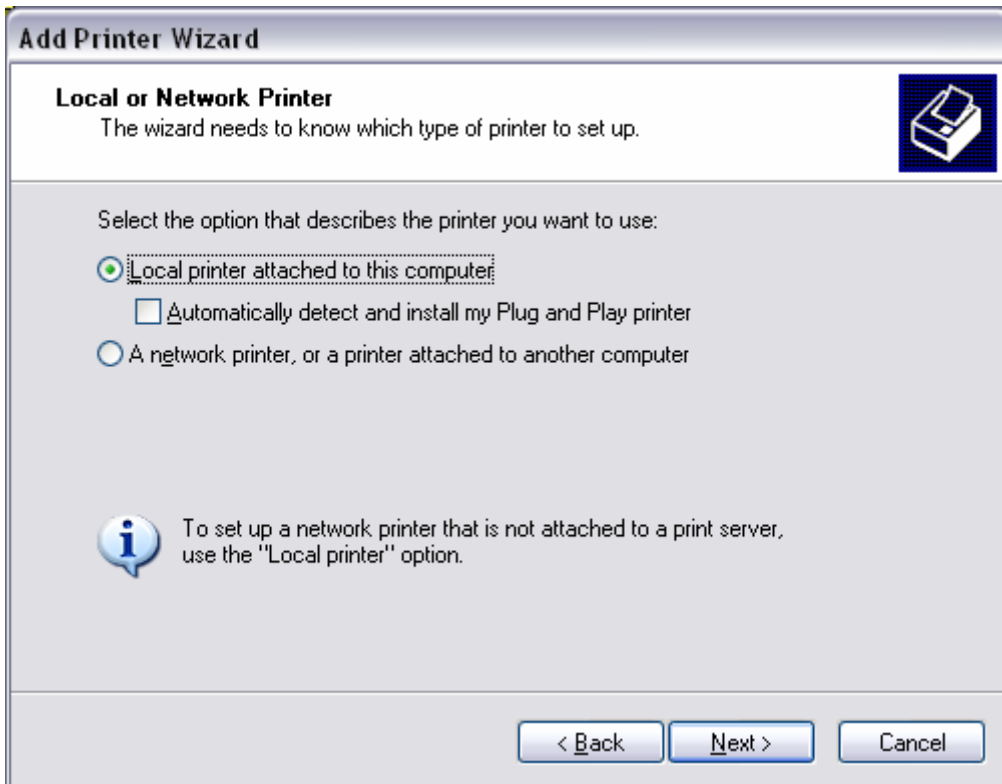
Step 3 Click on the **Browse** button and browse to the print server.



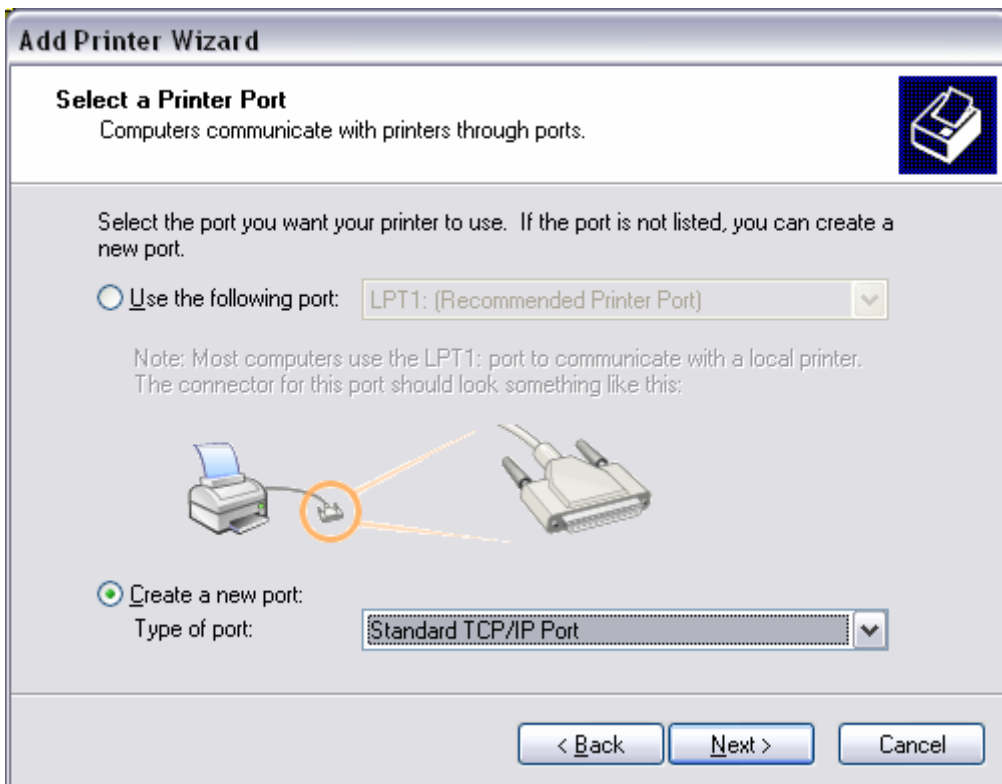
Highlight the Print Server and click on **OK** to return to the Add Printer Wizard.



Click on **Next**. If you are unable to do this you can manually enter the Print Server by using two backslashes, the IP address, one backlash and the port name of you printer.



Step 3 Select **Create a New Port** and select **Standard TCP/IP port**. Click **Next**.



Step 4 Enter the IP address of the print server (192.168.0.1). Leave the port name with the default name. Click **Next**.

Add Standard TCP/IP Printer Port Wizard

Add Port
For which device do you want to add a port?

Enter the Printer Name or IP address, and a port name for the desired device.

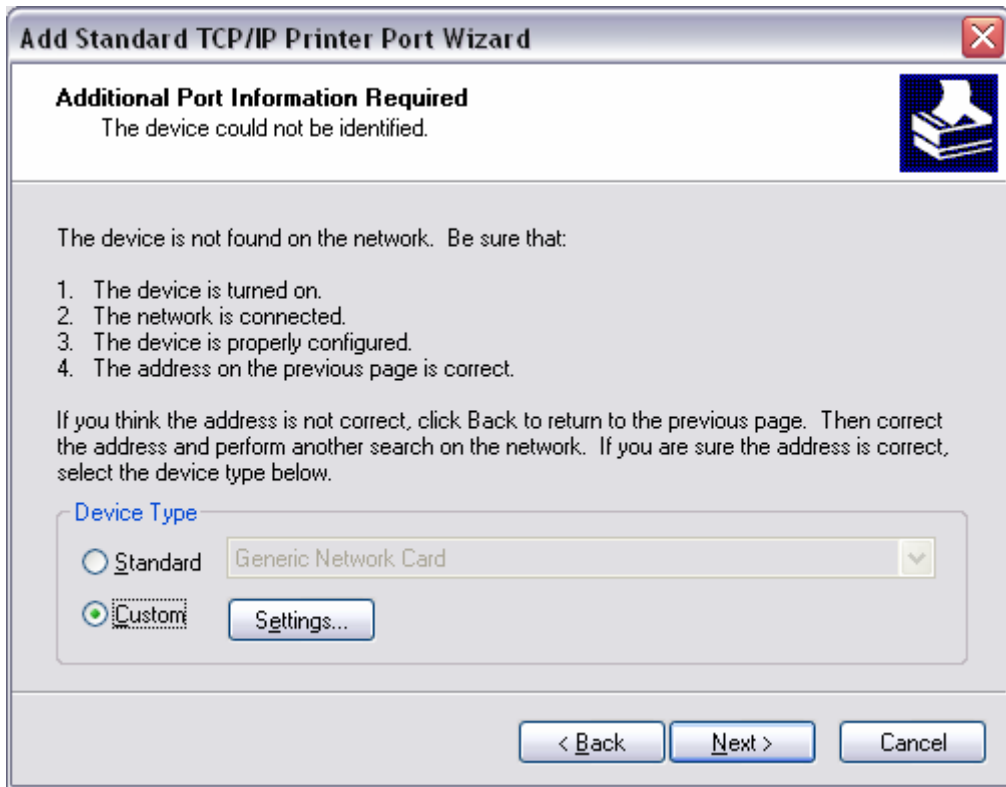
Printer Name or IP Address: 192.168.0.1

Port Name: IP_192.168.0.1

< Back Next > Cancel

Step 5 You will get a message saying that additional port information required.

Step 6 Select **Custom** and then click **Settings**.



Step 7 Set the Protocol to **LPR**.

Step 8 For the **LPR Settings** for the TE100-PS3 Plus the Queue Name will be PS-xxxxxx-P1, x being the actual number listed in the Port Name box. It is case sensitive!

Configure Standard TCP/IP Port Monitor

Port Settings

Port Name: IP_154.164.215.1

Printer Name or IP Address: 154.164.215.1

Protocol

Raw LPR

Raw Settings

Port Number: 9100

LPR Settings

Queue Name: PS-xxxxxxx-P1

LPR Byte Counting Enabled

SNMP Status Enabled

Community Name: public

SNMP Device Index: 1

OK Cancel

Step 9 Select **OK** > **Finish**.

Step 10 Continue with the **Add Printer Wizard**. Choose your printer from the list or click **Have Disk** and point to your printer driver disk.

